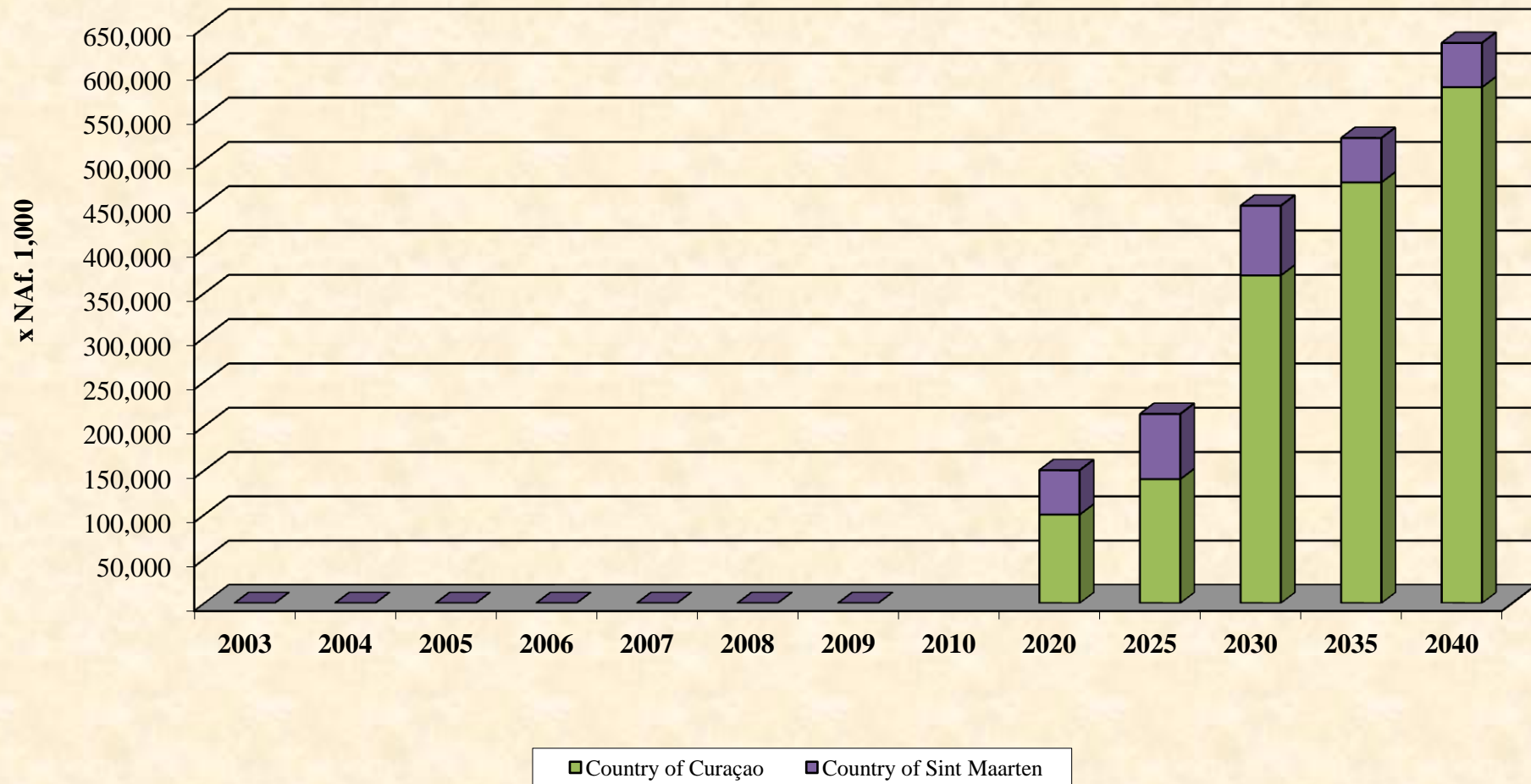


Centrale Bank van Curaçao en Sint Maarten
(Central Bank)

Financial Market Information
November 2011

General Government Bond Maturity Schedule

as per November 30, 2011



Indicative prices as of:

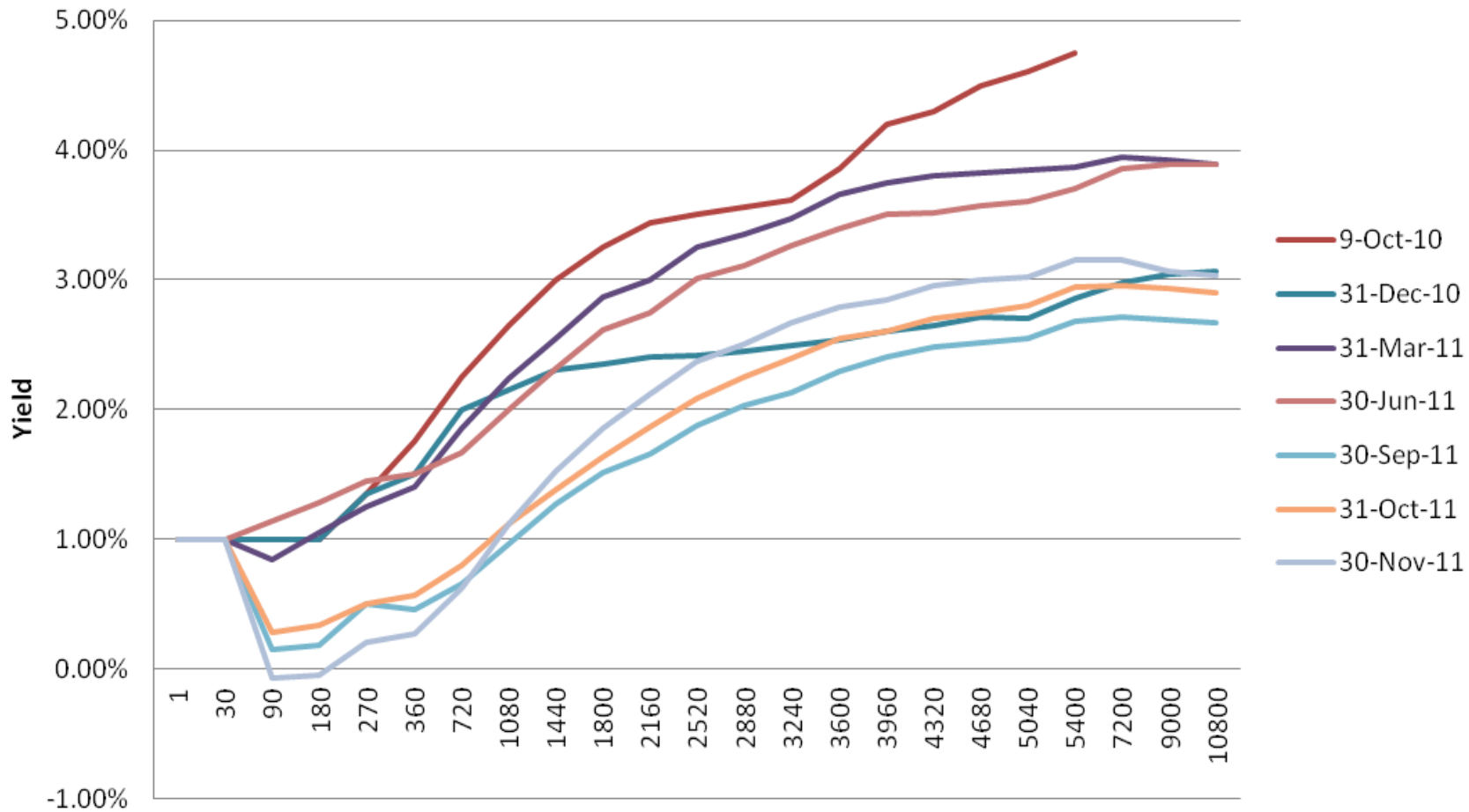
30-Nov-11

Government Bonds including issuance of
October 15th and October 21st 2010

Issue	Issue date	Maturity date	Coupon rate	ANG MM yield	Indicative price	
0NA7O93005	8 1/8% Neth. Antilles 2002/2011 (s/a)	9-Dec-02	9-Dec-11	8.125%	1.00%	100.18
0NA7F13C09	9 7/8% Neth. Antilles 2002/2012 (s/a)	1-Mar-02	1-Mar-12	9.875%	0.29%	102.42
0NA7H13C07	7 1/2% Neth. Antilles 2002/2012 (s/a)	1-May-02	1-May-12	7.500%	0.32%	103.01
0NA7HK3C01	10% Neth. Antilles 2002/2012 (s/a)	20-May-02	20-May-12	10.000%	0.33%	104.56
0EC96Q1O01	7 3/8% Curaçao 2007/2012 (s/a)	26-Jun-07	26-Jun-12	7.375%	0.39%	103.99
0EC94A2007	7 1/2% Curaçao 2007/2013 (s/a)	10-Apr-07	10-Apr-13	7.500%	0.66%	109.26
0NA9HD1O07	5% Neth. Antilles 2008/2013	13-May-08	13-May-13	5.000%	0.68%	106.24
0EC7TU3C00	7 7/8% Curaçao 2003/2013 (s/a)	30-May-03	30-May-13	7.875%	0.69%	110.71
0NA8ZG2C06	7 3/8% Neth. Antilles 2006/2013	16-Nov-06	16-Nov-13	7.375%	0.79%	112.78
0EC8C63009	7 5/8% Curaçao 2004/2013 (s/a)	6-Dec-04	6-Dec-13	7.625%	0.81%	113.61
0EC81Q3C05	8% Curaçao 2004/2014 (s/a)	26-Jan-04	26-Jan-14	8.000%	0.85%	115.23
0NA82K3C01	8% Neth. Antilles 2004/2014 (s/a)	20-Feb-04	20-Feb-14	8.000%	0.87%	115.65
0EC8713C02	7 7/8% Curaçao 2004/2010/14 (s/a)	1-Jul-04	1-Jul-14	7.875%	0.99%	117.54
0NA8XF3C07	7 1/2% Neth. Antilles 2006/2014 (s/a)	15-Sep-06	15-Sep-14	7.500%	1.05%	117.69
0EC8IM3C02	7 1/4% Curaçao 2005/2015 (s/a)	22-Jun-05	22-Jun-15	7.250%	1.27%	120.77
0EC9JA2C06	5 1/2% Curaçao 2008/2015 (s/a)	10-Jul-08	10-Jul-15	5.500%	1.28%	114.84
0NA8K53C02	7 1/4% Neth. Antilles 2005/2015 (s/a)	5-Aug-05	5-Aug-15	7.250%	1.30%	121.32
0NA9KR2C09	5 1/2% Neth. Antilles 2008/2015 (s/a)	3-Oct-08	3-Oct-15	5.500%	1.34%	115.52
0NA8P23C04	7% Neth. Antilles 2006 / 2016 (s/a)	2-Jan-06	2-Jan-16	7.000%	1.41%	122.15
0NA8T23C00	7 1/2% Neth. Antilles 2006 / 2016 (s/a)	8-May-06	8-May-16	7.500%	1.49%	125.70
0EC8Z13C09	7 1/2% Curaçao 2006 / 2016 (s/a)	1-Nov-06	1-Nov-16	7.500%	1.62%	127.71
0EC91Q3C04	8% Curaçao 2007 / 2017 (s/a)	26-Jan-07	26-Jan-17	8.000%	1.67%	131.12
0EC8US3O05	7 7/8% Curaçao 2006/2017 (s/a)	28-Jun-06	28-Jun-17	7.875%	1.77%	132.27
0EC9A13C07	8% Curaçao 2007/2017 (s/a)	3-Sep-07	3-Sep-17	8.000%	1.81%	133.67
0NA9BU3C03	7 5/8% Neth. Antilles 2007/2017 (s/a)	30-Nov-07	30-Nov-17	7.625%	1.87%	132.52
0NA9EJ3C05	7 1/2% Neth. Antilles 2008/2018 (s/a)	19-Feb-08	19-Feb-18	7.500%	1.92%	132.58
0NA7415008	8% Neth. Antilles 2003/2018 (s/a)	18-Jun-03	18-Jun-18	8.000%	1.99%	136.75
OECAAF3C06	2 1/2% Curaçao 2010/2020 (s/a)	15-Oct-10	15-Oct-20	2.500%	2.37%	101.01
OSMAAL3C03	2 1/2% Sint Maarten 2010/2020 (s/a)	21-Oct-10	21-Oct-20	2.500%	2.38%	100.99
OECAAD5003	2 3/4% Curaçao 2010/2025 (s/a)	15-Oct-10	15-Oct-25	2.750%	2.79%	99.50
OSMAAL5005	2 5/8% Sint Maarten 2010/2025 (s/a)	21-Oct-10	21-Oct-25	2.625%	2.79%	98.06
OECAAF6O09	2 7/8% Curaçao 2010/2030 (s/a)	15-Oct-10	15-Oct-30	2.875%	2.96%	98.85
OSMAAL6O06	2 3/4% Sint Maarten 2010/2030 (s/a)	21-Oct-10	21-Oct-30	2.750%	2.96%	97.05
OECAAF8C01	3% Curaçao 2010/2035 (s/a)	15-Oct-10	15-Oct-35	3.000%	2.94%	100.99
OSMAAL8C08	2 7/8% Sint Maarten 2010/2035 (s/a)	21-Oct-10	21-Oct-35	2.875%	2.94%	98.86
OECAAF002	3 1/8% Curaçao 2010/2040 (s/a)	15-Oct-10	15-Oct-40	3.125%	2.91%	104.17
OSMAALA009	3% Sint Maarten 2010/2040 (s/a)	21-Oct-10	21-Oct-40	3.000%	2.91%	101.74

Interest on securities issued before October 1, 1999 is free of taxes. Therefore, prices for these securities can deviate.

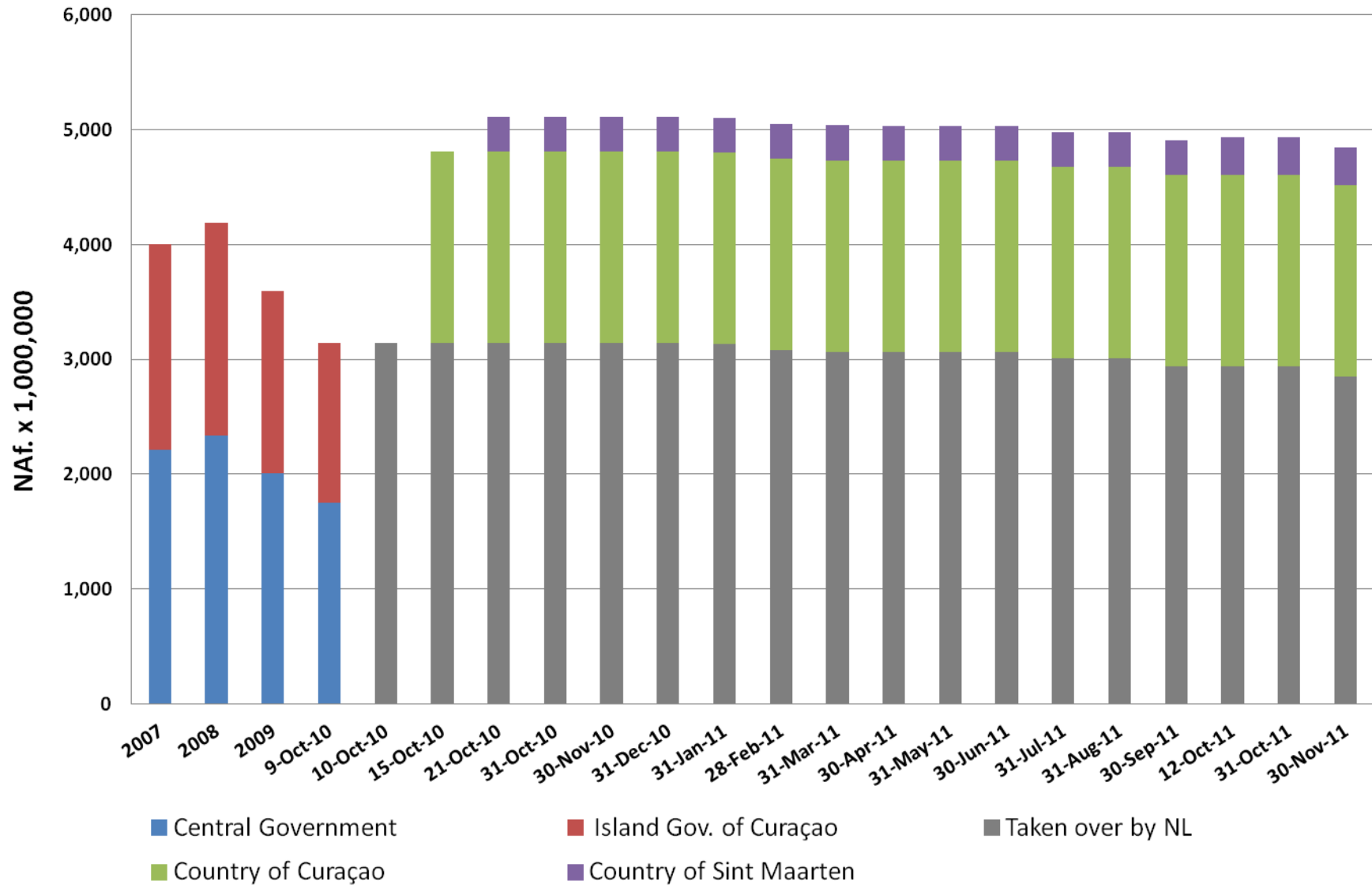
Local yield in days



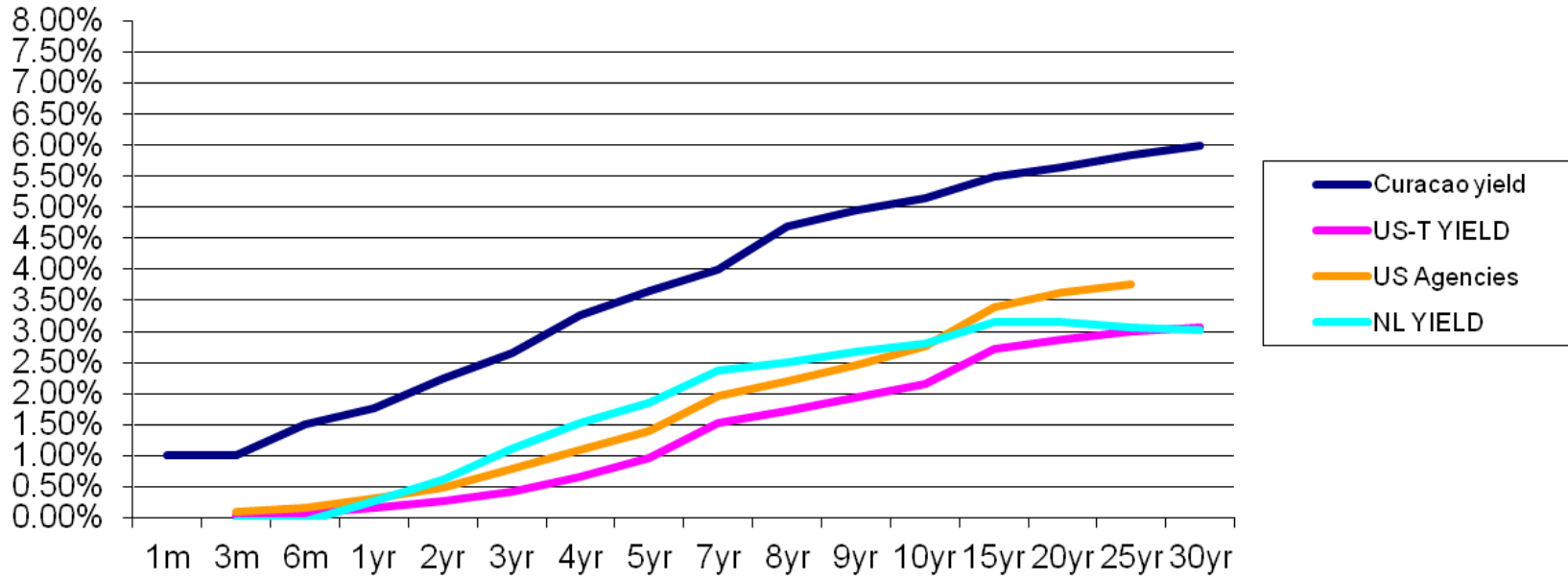
Yield table incl debt relief

		30-Nov-11
o/n	1	1.00%
1m	30	1.00%
3m	90	-0.07%
6m	180	-0.05%
9m	270	0.20%
1yr	360	0.27%
2yr	720	0.62%
3yr	1080	1.12%
4yr	1440	1.52%
5yr	1800	1.86%
6yr	2160	2.12%
7yr	2520	2.37%
8yr	2880	2.50%
9yr	3240	2.67%
10yr	3600	2.79%
11yr	3960	2.85%
12yr	4320	2.95%
13yr	4680	3.00%
14yr	5040	3.02%
15yr	5400	3.15%
20yr	7200	3.15%
25yr	9000	3.07%
30yr	10800	3.03%

Outstanding Securities



Curacao vs US-T vs US Agencies vs NL Yield (Nov 30, 2011)



Curacao yield

This yield curve is an extrapolation to today's yield data, excluding the issuance of October 15th and 21st 2010.

		30-Nov-11
1m	1m	1.00%
3m	3m	1.00%
6m	6m	1.50%
1yr	1yr	1.76%
2yr	2yr	2.25%
3yr	3yr	2.65%
4yr	4yr	3.25%
5yr	5yr	3.65%
7yr	7yr	4.00%
8yr	8yr	4.70%
9yr	9yr	4.95%
10yr	10yr	5.15%
15yr	15yr	5.50%
20yr	20yr	5.65%
25yr	25yr	5.85%
30yr	30yr	6.00%